



STANDARD
cd us
 E168250

TZ24

TIMER MONOSCALA, MULTITENSIONE, MONOFUNZIONE
 SINGLERANGE, MULTIVOLTAGE, SINGLEFUNCTION TIMER

DATI TECNICI / TECHNICAL DATA

POTENZA ASSORBITA / INPUT POWER

0,7VA@12Vac 50Hz
 0,5W@12Vdc
 0,5W@24Vdc
 11VA@230Vac 50Hz

PRECISIONE DI FONDO SCALA / FULL SCALE ERROR

±5%

IMPOSTAZIONE MINIMA / MINIMUM TIME SETTING

1/60s

TEMPO DI RESET / RESET TIME

50ms

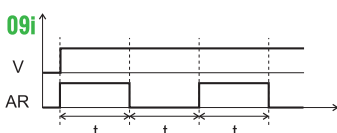
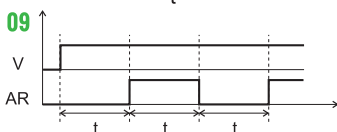
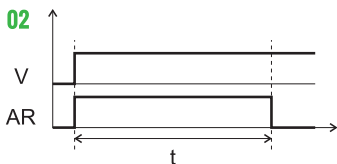
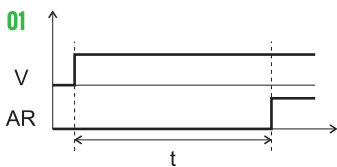
LIMITI DI TEMPERATURA / SURROUNDING AIR

-10 ÷ +55 °C
 stoccaggio/storage -25 ÷ +65 °C

CARATTERISTICHE DEL RELÈ / RELAY TECHNICAL DATA

Vita elettrica Electrical life	1x10 ⁵ op.
Vita Meccanica Mechanical life	1x10 ⁷ op.
Corrente max commutabile Max current rating	8A AC1
Tensione max commutabile Max voltage rating	250 Vac

FUNZIONI / FUNCTIONS



CARATTERISTICHE / FEATURES

Tensioni disponibili / Supply voltage :

12 Vac-dc
 24÷48Vdc ÷ 24÷230 Vac

Tempi fondoscala impostabili / Full scale time setting:

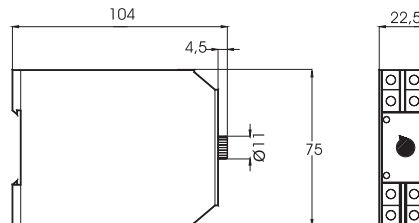
1s - 3s - 6s - 12s - 30s - 1m - 2m - 3m - 6m - 12m - 30m - 1h

Funzioni impostabili / Function settings :

01 + 02 + 09 + 09i

DIMENSIONI / DIMENSIONS

in mm



CODICE D'ORDINE

ORDER CODE

TZ24 XX FF TT YY 0

XX	Sc.912	12
	Sc.913	13
	Sc.914	14
FF	F.01	01
	F.02	02
	F.09	09
	F.09i	9i
	1Sec	01
TT	3Sec	03
	6Sec	06
	12Sec	12
	30Sec	30
	1Min	M1
	2Min	M2
	3Min	M3
	6Min	M6
	12Min	1M
	30Min	3M
YY	1H	H1
	12Vac/dc	12
	24-48Vdc/24-230Vac	60

SCHEMI DI COLLEGAMENTO

WIRING DIAGRAMS

